



 KAILONG HIGHTECH

KAILONG HIGHTECH ELECTRONICS CO.,LTD



DAX-1050	10"	50oz	4ohm	2"ASV.	200W/Max
DAX-1250	12"	50oz	4ohm	2"ASV.	250W/Max
DAX-1560	15"	60oz	4ohm	2.5"ASV.	350W/Max



DAX-1052R	10"	40+40oz	4ohm	2"ASV.	250W/Max
DAX-1252R	12"	50+50oz	4ohm	2"ASV.	300W/Max
DAX-1562R	15"	60+60oz	4ohm	2.5"ASV.	400W/Max



KAW6671042	10"	40+40oz	4ohm	2"ASV.	250W/Max
KAW6671242	12"	50+50oz	4ohm	2"ASV.	300W/Max
KAW6671562	15"	60+60oz	4ohm	2.5"ASV.	400W/Max



KH-YDLDS1050	10"	50oz	4ohm	2"ASV.	200W/Max
KH-YDLDS1250	12"	50oz	4ohm	2"ASV.	250W/Max
KH-YDLDS1550	15"	60oz	4ohm	2.5"ASV.	350W/Max



KH-1040	10"	40oz	4ohm	2"ASV.	200W/Max
KH-1240	12"	40oz	4ohm	2"ASV.	250W/Max
KH-1550	15"	50oz	4ohm	2"ASV.	350W/Max



KH-68830PSH	8"	30oz	4ohm	1.5"ASV.	150W/Max
KH-681040PSH	10"	40oz	4ohm	2"ASV.	250W/Max
KH-681240PSH	12"	50oz	4ohm	2"ASV.	300W/Max
KH-681560PSH	15"	50oz	4ohm	2"ASV.	350W/Max



KH-68830CS	8"	30oz	4ohm	1.5"ASV.	150W/Max
KH-681040CS	10"	40oz	4ohm	2"ASV.	250W/Max
KH-681240CS	12"	50oz	4ohm	2"ASV.	300W/Max
KH-681560CS	15"	50oz	4ohm	2"ASV.	350W/Max



MAX1040	10"	40oz	4ohm	2"ASV.	200W/Max
MAX1240	12"	40oz	4ohm	2"ASV.	250W/Max
MAX1550	15"	50oz	4ohm	2"ASV.	350W/Max



KH-1005	10"	40+40oz	4ohm	2"ASV.	250W/Max
HK-1205	12"	50+50oz	4ohm	2"ASV.	300W/Max
KH-1505	15"	50+50oz	4ohm	2.5"ASV.	400W/Max



KX-1042	10"	40+40oz	4ohm	2"ASV.	250W/Max
KX-1242	12"	50+50oz	4ohm	2"ASV.	300W/Max
KX-1562	15"	50+50oz	4ohm	2.5"ASV.	400W/Max



TG-1040	10"	40oz	4ohm	2"ASV.	200W/Max
TG-1240	12"	40oz	4ohm	2"ASV.	250W/Max
TG-1550	15"	50oz	4ohm	2"ASV.	350W/Max



KH-202S KH-202G
 3.75" Aluminum Bullet Horn
 1" Voice Coil(ASV)
 6.3 oz Magnet
 4 ohm / 8 ohm Impedance
 Frequency Response: 2K~20KHz
 Sensitivity: 92 dB (1m/1w)
 Max.Power: 200Watts



KH-251PSH KH-251BSH
 3.5" Aluminum Bullet Horn
 1" Voice Coil(ASV)
 6.3 oz Magnet
 4 ohm / 8 ohm Impedance
 Frequency Response: 1.5K~20KHz
 Sensitivity: 90 dB (1m/1w)
 Max.Power: 200Watts
 (Shining color is available)



KT-2B-1
 3" Aluminum Bullet Horn
 1" Voice Coil(ASV)
 5.4 oz Magnet
 4 ohm / 8 ohm Impedance
 Frequency Response: 3K~20KHz
 Sensitivity: 98 dB (1m/1w)
 Max.Power: 150Watts



KH-252BSH
 3.2" Aluminum Bullet Horn
 1" Voice Coil(ASV)
 6.3 oz Magnet
 4 ohm / 8 ohm Impedance
 Frequency Response: 1.5K~20KHz
 Sensitivity: 97 dB (1m/1w)
 Max.Power: 200Watts
 (Shining color is available)

KH-451BSH
 3.75" Aluminum Bullet Horn
 1.75" Voice Coil(ASV)
 18 oz Magnet
 4 ohm / 8 ohm Impedance
 Frequency Response: 1.5K~20KHz
 Sensitivity: 100 dB (1m/1w)
 Max.Power: 350Watts
 (Shining color is available)



KH-22S
 4" Aluminum Bullet Horn
 1.75" Voice Coil(ASV)
 25 oz Magnet
 4 ohm / 8 ohm Impedance
 Frequency Response: 1.5K~20KHz
 Sensitivity: 100 dB (1m/1w)
 Max.Power: 400Watts
 (Black Color is available)

KH-23S
 6" Aluminum Bullet Horn
 3" Voice Coil(ASV)
 45 oz Magnet
 4 ohm / 8 ohm Impedance
 Frequency Response: 1K~20KHz
 Sensitivity: 103 dB (1m/1w)
 Max.Power: 600Watts
 (Black color is available)



KL-17

Frequency Response: 5K~20KHz
Sensitivity: 105 dB (1m/1w)
Power Rms/Max: 75/150W
Impedance: 4~8 Ohm
Size: ϕ 45x24mm



KL-25

Frequency Response: 5K~20KHz
Sensitivity: 105 dB (1m/1w)
Power Rms/Max: 75/150W
Impedance: 4~8 Ohm
Size: ϕ 52x28mm



KL-317

Frequency Response: 5K~20KHz
Sensitivity: 103 dB (1m/1w)
Power Rms/Max: 75/150W
Impedance: 4~8 Ohm
Size: 91x91x60mm



KL-318

Frequency Response: 3K~20KHz
Sensitivity: 91 dB (1m/1w)
Power Rms/Max: 60/120W
Impedance: 4~8 Ohm
Size: ϕ 115x76mm



KL-319

Frequency Response: 5K~20KHz
Sensitivity: 103 dB (1m/1w)
Power Rms/Max: 75/150W
Impedance: 4~8 Ohm
Size: 91x91x60mm



KL-320

Frequency Response: 5K~20KHz
Sensitivity: 103 dB (1m/1w)
Power Rms/Max: 75/150W
Impedance: 4~8 Ohm
Size: 105x105x56mm



KL-321

Frequency Response: 5K~20KHz
Sensitivity: 110 dB (1m/1w)
Power Rms/Max: 100/200W
Impedance: 4~8 Ohm
Size: ϕ 98x56mm



KL-321A

Frequency Response: 5K~20KHz
Sensitivity: 103 dB (1m/1w)
Power Rms/Max: 75/150W
Impedance: 4~8 Ohm
Size: ϕ 98x63mm



KL-321B

Frequency Response: 5K~20KHz
Sensitivity: 110 dB (1m/1w)
Power Rms/Max: 100/200W
Impedance: 4~8 Ohm
Size: ϕ 98x56mm



KL-321BS

Frequency Response: 5K~20KHz
Sensitivity: 110 dB (1m/1w)
Power Rms/Max: 100/200W
Impedance: 4~8 Ohm
Size: ϕ 98x56mm



KL-321S

Frequency Response: 5K~20KHz
Sensitivity: 110 dB (1m/1w)
Power Rms/Max: 100/200W
Impedance: 4~8 Ohm
Size: ϕ 98x56mm



KL-321SL

Frequency Response: 5K~20KHz
Sensitivity: 110 dB (1m/1w)
Power Rms/Max: 100/200W
Impedance: 4~8 Ohm
Size: ϕ 98x56mm



KL-322B

Frequency Response: 5K~20KHz
Sensitivity: 110 dB (1m/1w)
Power Rms/Max: 100/200W
Impedance: 4~8 Ohm
Size: 80x80x59mm



KL-322BS

Frequency Response: 5K~20KHz
Sensitivity: 110 dB (1m/1w)
Power Rms/Max: 100/200W
Impedance: 4~8 Ohm
Size: 80x80x59mm



KL-322BSL

Frequency Response: 5K~20KHz
Sensitivity: 110 dB (1m/1w)
Power Rms/Max: 100/200W
Impedance: 4~8 Ohm
Size: 80x80x59mm



KL-322S

Frequency Response: 5K~20KHz
Sensitivity: 110 dB (1m/1w)
Power Rms/Max: 100/200W
Impedance: 4~8 Ohm
Size: 80x80x59mm



KL-322SL

Frequency Response: 5K~20KHz
Sensitivity: 110 dB (1m/1w)
Power Rms/Max: 100/200W
Impedance: 4~8 Ohm
Size: 80x80x59mm



KL-324

Frequency Response: 5K~20KHz
Sensitivity: 103 dB (1m/1w)
Power Rms/Max: 75/150W
Impedance: 4~8 Ohm
Size: 100x100x46mm



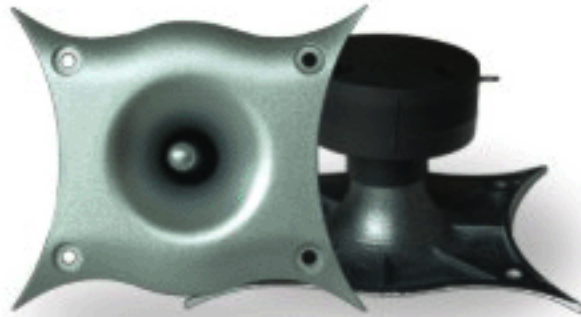
KL-325

Frequency Response: 3K~20KHz
 Sensitivity: 95 dB (1m/1w)
 Power Rms/Max: 60/120W
 Impedance: 4~8 Ohm
 Size: 122x113x72mm



KL-325A

Frequency Response: 5K~20KHz
 Sensitivity: 103 dB (1m/1w)
 Power Rms/Max: 75/150W
 Impedance: 4~8 Ohm
 Size: 122x113x82mm



KL-326

Frequency Response: 3K~20KHz
 Sensitivity: 95 dB (1m/1w)
 Power Rms/Max: 60/120W
 Impedance: 4~8 Ohm
 Size: 132x113x72mm



KL-326A

Frequency Response: 5K~20KHz
 Sensitivity: 103 dB (1m/1w)
 Power Rms/Max: 75/150W
 Impedance: 4~8 Ohm
 Size: 132x113x82mm



KL-327

Frequency Response: 5K~20KHz
 Sensitivity: 100 dB (1m/1w)
 Power Rms/Max: 75/150W
 Impedance: 4~8 Ohm
 Size: 73x73x58mm



KL-328

Frequency Response: 5K~20KHz
 Sensitivity: 101 dB (1m/1w)
 Power Rms/Max: 75/150W
 Impedance: 4~8 Ohm
 Size: 60x90x39mm



KH-6525B

2 x 6.5" Woofers
Paper Cone with rubber surround.
10 oz Magnet
2 Neodymium Tweeters
2 x 2 Way Network Crossover
4 ohm Impedance
200 Watts Max



KH-6525S

2 x 6.5" Woofers
Carbon Fiber Injection Cone
with Rubber Surround.
10 oz Magnet
2 Neodymium Tweeters
2 x 2 Way Network Crossover
4 ohm Impedance
200 Watts Max



FBN166

6.5" Woofer
4 Ohms
50 Watts Power
1" V.C. TIL+ENNH WIRE
Neodymium magnet: N35SH
Carbon fiber Injection Cone with rubble Surround
Sensitivity: 90 dB
Frequency Response: 85Hz-8kHz



FBN131

5.5" Woofer
4 Ohms
40 Watts Power
1" V.C. TIL+ENNH WIRE
Neodymium magnet: N35SH
Carbon fiber Injection Cone with rubble Surround
Sensitivity: 90 dB
Frequency Response: 100Hz-8kHz



KH-889B KH-889BLU

2" Round Soft Dome Tweeter
0.75" Voice Coil(ASV)
0.75" Neodymium Magnet
4 ohm Impedance
Frequency Response: 2K~20KHz
Sensitivity: 90 dB (1m/1w)
90 Watts Max



KH-13B

1" Round Soft Dome Tweeter
0.5" Voice Coil(ASV)
0.5" Neodymium Magnet
4 ohm Impedance
Frequency Response: 2K~20KHz
Sensitivity: 91 dB (1m/1w)
90 Watts Max

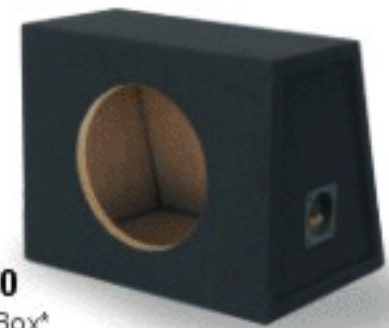


KH-255B

2.25" Round Soft Dome Tweeter
1" Voice Coil(ASV)
1" Neodymium Magnet
4 ohm Impedance
Frequency Response: 1.5K~20KHz
Sensitivity: 95 dB (1m/1w)
120 Watts Max



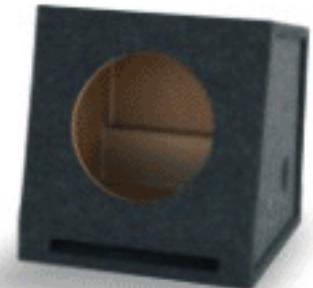
KH-6530
 6" 3 Way BoomBox
 6.5" Woofer
 3" Midrange
 3" Piezo Tweeter
 Carpet Finishing
 4 ohm
 Max.Power 200W



EP-10
 Single Box*

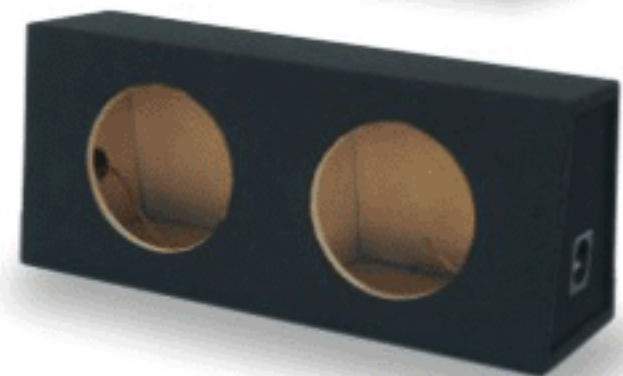


KH-6540
 6" 2Way+2Way BoomBox
 6.5" Woofer
 2"x5" Piezo Tweeter
 Carpet Finishing
 4 ohm
 Max.Power 250W



EP-12
 Single Box*

*Size According to Customer's Requirement



EP-101
 Double Box*



KH-800
 Stereo Speaker System
 R.M.S. Subwoofer: 10 W
 Satellites: 3W+3W
 Speaker Driver: 89mm Woofer(Subwoofer)
 66mm Fullrange(Satellites)
 Impedance: 8 Ohm
 Control Panel: Power/Volume/Bass/Treble
 Dimensions: 90x200x280mm(Subwoofer)
 (WxHxD) 85x120x85mm(Satellites)
 Power Supply: 230V 50Hz,0.05A
 Power Consumption(10%THD): 12W
 Frequency Response: 40-300Hz(Subwoofer)
 120-20kHz(Satellites)



KH-100B
 Stereo Speaker System
 RMS: 2W+2W
 Speaker Driver: 50x90mm Fullrange
 Impedance: 4 Ohm
 Audio Control: Power/Volume
 Dimensions(WxHxD): 70x200x75mm
 Power Supply: 230V 50Hz,0.03A
 Power Consumption(10% THD): 7W
 Frequency Response: 200Hz-20kHz



KH-200S
 Stereo Speaker System
 RMS: 3W+3W
 Speaker Driver: 53x53mm Fullrange
 Impedance: 4 Ohm
 Audio Control: Power/Volume
 Dimensions(WxHxD): 67x106x84mm
 Power Supply: 230V 50Hz,0.03A
 Power Consumption(10% THD): 7W
 Frequency Response: 80Hz-20kHz



KAILONG HIGHTECH ELECTRONICS CO.,LTD

ADD: No.318 Qianjin Rd,Tudian Subarea of Tongxiang Economic Developing Zone,
Tudian,Tongxiang, Zhejiang,China. P.S.: 314503

TEL: +86-573-8863803, 8863088

FAX: +86-573-8863809, 8867063

EMAIL: info@kailongelec.com WEB: www.kailongelec.com